



β -tubulin Mouse Monoclonal Antibody (3F7)

E12-050

Catalog Number: E12-050

Amount: 100 μ g/100 μ l

Clone Number: 3F7

Background: Tubulin is one of several members of a small family of globular proteins. The tubulin superfamily includes five distinct families, the alpha-, beta-, gamma-, delta-, and epsilon-tubulins. The most common members of the tubulin family are α -tubulin and β -tubulin, the proteins that make up microtubules. Each has a molecular weight of approximately 55 KD. Microtubules are assembled from dimers of α - and β -tubulin.

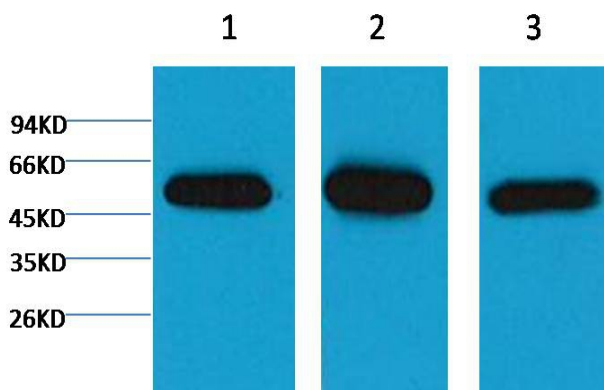
Form of Antibody: Mouse IgG1 in phosphate buffered saline (without Mg^{2+} and Ca^{2+}), pH 7.4, 150mM NaCl, 0.02% sodium azide and 50% glycerol.

Storage/Stability: Store at -20 $^{\circ}$ C/1 year

Specificity/Sensitivity: The β I tubulin antibody can recognize endogenous β I tubulin proteins.

Reactivity: H, R, M

Applications: WB: 1:5,000-10,000



Western blot analysis of 1) HeLa, 2) Mouse Brain Tissue, 3) Rat Brain Tissue with β -tubulin Mouse Monoclonal Antibody (3F7) diluted at 1:5,000.

For Research Use Only