



α -tubulin Mouse Monoclonal Antibody

E12-048

Catalog Number: E12-048

Amount: 100 μ g/100 μ l

Clone Number: 8F11

Background: Tubulin is one of several members of a small family of globular proteins. The tubulin superfamily includes five distinct families, the alpha-, beta-, gamma-, delta-, and epsilon-tubulins. The most common members of the tubulin family are α -tubulin and β -tubulin, the proteins that make up microtubules. Each has a molecular weight of approximately 55 KD. Microtubules are assembled from dimers of α - and β -tubulin

Form of Antibody: Mouse IgG1 in phosphate buffered saline (without Mg²⁺ and Ca²⁺), pH 7.4, 150mM NaCl, 0.02% sodium azide and 50% glycerol.

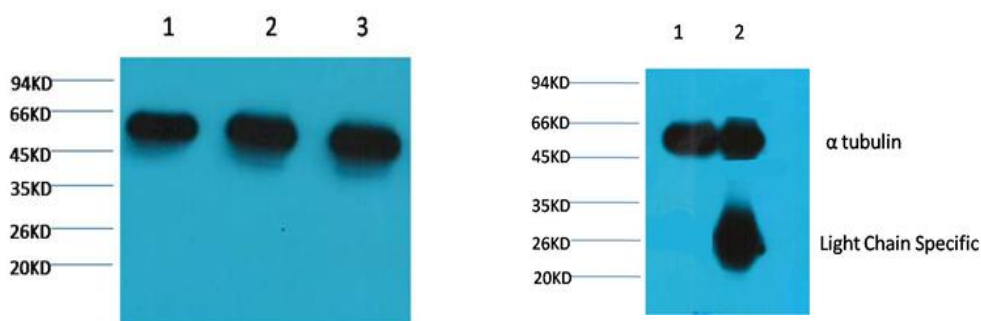
Storage/Stability: Store at -20°C/1 year. Do not aliquot the antibody.

Specificity/Sensitivity: The α -tubulin antibody can detect endogenous α -tubulin protein

Reactivity: H, R, M

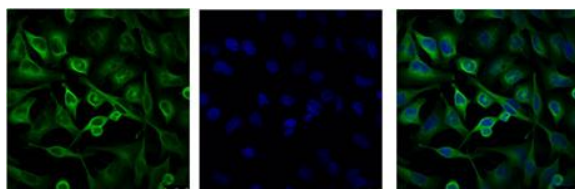
MW: 52KD

Applications: WB: 1:5,000-10,000 IP:1:200 IF: 1:100-200 IHC: 1:100-200



Western blot analysis of 1) HeLa, 2) Rat Brain Tissue, 3) Mouse Brain Tissue with E12-048 diluted at 1:5,000.

Lane 1: Input: Mouse Brain Tissue Lysate. Lane 2: IP product: IP dilute 1:200. Western blot analysis: primary antibody E12-048 1:5,000 Secondary antibody: Goat anti-Mouse IgG, Light chain specific (S003), 1:5,000



IF analysis of HeLa with E12-048) and DAPI diluted at 1:100.



Immunohistochemical analysis of paraffin-embedded human Colon carcinoma using E12-048 diluted at 1:500.

For Research Use Only