



## Plant-actin Mouse Monoclonal Antibody

E12-047

**Catalog Number:** E12-047

**Amount:** 100µg/100µl

**Clone Number:** Q30

**Background:** Actin is a highly conserved protein and an essential component of cell cytoskeleton and plays an important role in cytoplasmic streaming, cell shape determination, cell division, organelle movement and extension growth. Preferentially expressed in young and expanding tissues, floral organ primordia, developing seeds and emerging inflorescence. Antibodies against plant Actin are useful as loading controls for Western Blotting.

**Form of Antibody:** PBS, pH 7.4, containing 0.02% sodium azide as Preservative and 50% Glycerol.

**Storage/Stability:** Store at -20°C/1 year

**Specificity/Sensitivity:** Various Plants

*Reactivity: Arabidopsis, Nicotiana tabacum, Oryza sativa, Hordeum vulgare.*

*Predicted to work with: Brassica napus, Gossypium herbaceum, Solanum*

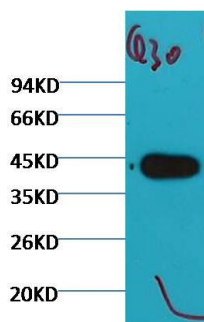
*tuberosum, Setaria italic, Triticum monococcum, Brachypodium distachyon,*

*Chrysanthemum seticuspe, Glycine max, Mangifera, Thellungiella halophila, Zoysia*

*japonica, Isatis tinctoria.*

**Molecular Weight :** 43KD

**Applications:** WB: 1:2,000-5,000



Western blot analysis of Arabidopsis with plant actin Mouse mAb (Q30) diluted at 1:5,000

**For Research Use Only**