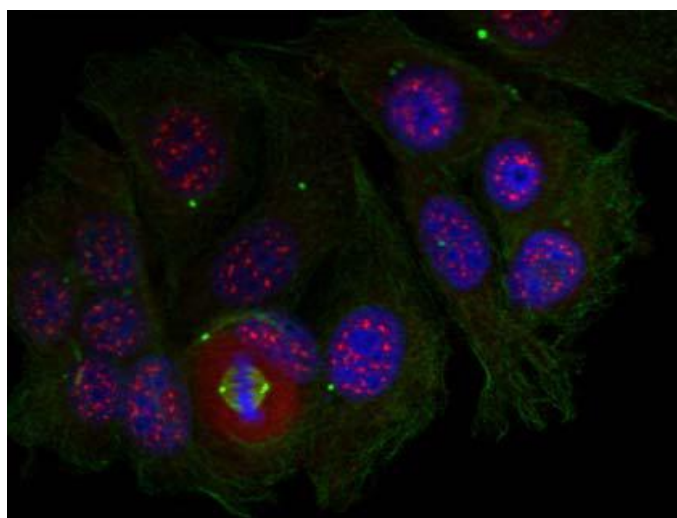




## MEF2A (Phospho-Thr319) Antibody

E011040

- Catalog Number:** E011040-1, E011040-2
- Amount:** 50µg/50µl, 100µg/100µl
- Form of Antibody:** Rabbit IgG in phosphate buffered saline (without Mg<sup>2+</sup> and Ca<sup>2+</sup>), pH 7.4, 150mM NaCl, 0.02% sodium azide and 50% glycerol.
- Storage/Stability:** Store at -20°C/1 year
- Immunogen:** The antiserum was produced against synthesized phosphopeptide derived from human MEF2A around the phosphorylation site of Thr319 (V-T-T<sup>P</sup>-P-S).
- Purification:** The antibody was affinity-purified from rabbit antiserum by affinity-chromatography using epitope-specific phosphopeptide. The antibody against non-phosphopeptide was removed by chromatography using non-phosphopeptide corresponding to the phosphorylation site.
- Specificity/Sensitivity:** MEF2A (Phospho-Thr319) antibody detects endogenous levels of MEF2A only when phosphorylated at Thr319.
- Reactivity:** Human, Mouse, Rat
- Applications:** IF:1:100~1:200
- Swiss-Prot No.:** Q02078
- References:** Shore, P. et al. (1995) *Eur. J. Biochem.* 229, 1-13  
Martin, J.F. et al. (1994) *Mol. Cell. Biol.* 14, 1647-1656  
Yu, Y.T. et al. (1992) *Genes Dev.* 6, 1783-1798  
Zhao, M. et al. (1999) *Mol. Cell. Biol.* 19, 21-30



Immunofluorescence staining of methanol-fixed HeLa cells using MEF2A (Phospho-Thr319) antibody (E011040, Red).

**For Research Use Only**